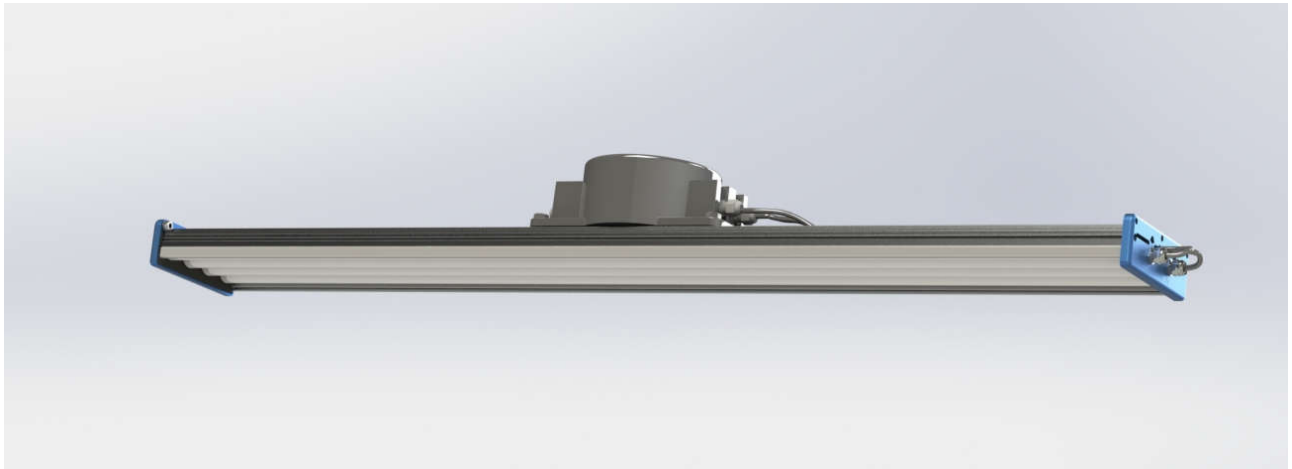


# HYPERION INTELLIGENT LED LUMINAIRE

The Hyperion Gen II is an ultra high efficiency, rugged LED light fixture with autonomous integrated intelligence designed for industrial environments.



## Light Source:

Light Source:	64 x Luxeon LED
Light Output:	17,500 lm nominal
LED Efficacy:	168 lm/W nominal
Lamp Power:	120W
Operating Life:	> 49,000 hrs L90 Projected L70 > 150k hrs
Colour Temp:	2700K, 4000K, 5000K opt.
Colour Rendering:	70 or 80 CRI opt.
Output:	No UV & IR. Blue Filter Opt
Dimming:	0-100%

## Power Supply:

Power Supply:	Integrated within fitting
Power Factor:	98% throughout dimming
Supply Efficiency:	~98%
Input Power:	122W (112W @ 24V AC)
Input Voltage:	240V AC (or 24V AC/DC)
THD	<20%
MTBF	3,500,000 hrs @ 25°C
Connector:	N/A

## Environmental:

Surge Protection:	Varistor 1.2kA 28J
Ambient Temp:	-40°C to 50°C
Operating Temp:	57°C at 25°C ambient
Fixture Efficacy:	140 lm/W Typical
Rating:	IP54

## Control:

Embedded within each fixture is an autonomous controller that interacts with nearby fittings to optimise power savings while maintaining excellent illumination. No additional control system is required.

## Optional Sensing of:

- Forklifts – RF Beacon
- General Motion - PIR
- Ambient Temperature
- Ambient Light
- Humidity

## Applications:

Distribution Centres, Industrial Aisle Lighting, Under Canopy, Coolstores, General Industrial Lighting.

## Installation:

Suspended, flush mount or purlin mount options.

## Mechanical:

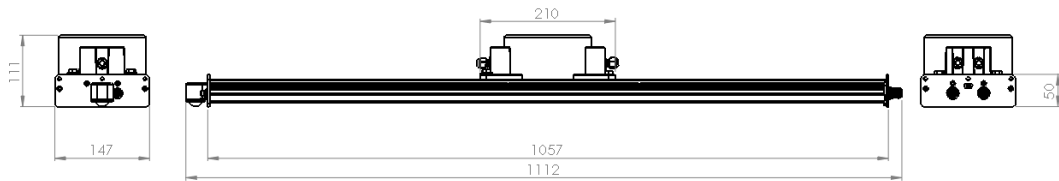
The housing is fully corrosion resistant in Aluminium & Stainless Steel with a design life of 20 years.

Body material: Aluminium

Length / Width : 1050 x 143mm

Weight: Approx 8.0kg

# HYPERION INTELLIGENT LED LUMINAIRE



## Features

**Highly Efficient:** 17,500 lumens at 122W for 140lm/W fixture efficacy.

**Extreme Operating Life:** > 150,000 hrs at 70% lumen maintenance with MTBF of 3,500,000 hrs at 25°C.

**Extreme Operating Conditions:** Runs down to -40°C with instant start. Internal temperature monitoring and compensation.

**Plug and Play:** Self contained, self configuring network. No supporting cabling or infrastructure required. Provides data transport for additional sensors.

**Forklift proximity detection:** Senses forklift proximity and illuminates a working area around the forklift. Static or fully dynamic (under motion).

**Occupancy Sensing:** Integrated PIR sensor allows adaptive lighting strategies and occupancy monitoring.

**Daylight Harvesting:** System wide detection of ambient light conditions reduces amount of "fill in" lighting required.

**Task Tuning:** Individual (or groups) of luminaires can maintain different target light levels to suit tasks being performed in their areas.

**Zone Control:** Luminaires can be grouped into zones for grouped control strategies (for example, loading bay vs aisle racking)

**Addressable:** Luminaires are uniquely addressable for unique control strategies (or sensor monitoring) independent of electrical wiring.

**Continuous Dimming:** Light level from 0-100% in 200+ steps for smooth lighting transitions. Ramp rates fully programmable.

**Safe:** No glass, mercury, UV or IR. No hazardous waste – recyclable.

**Future Proof:** Meets or exceeds DesignLights Consortium Intelligent Controls requirements 2016